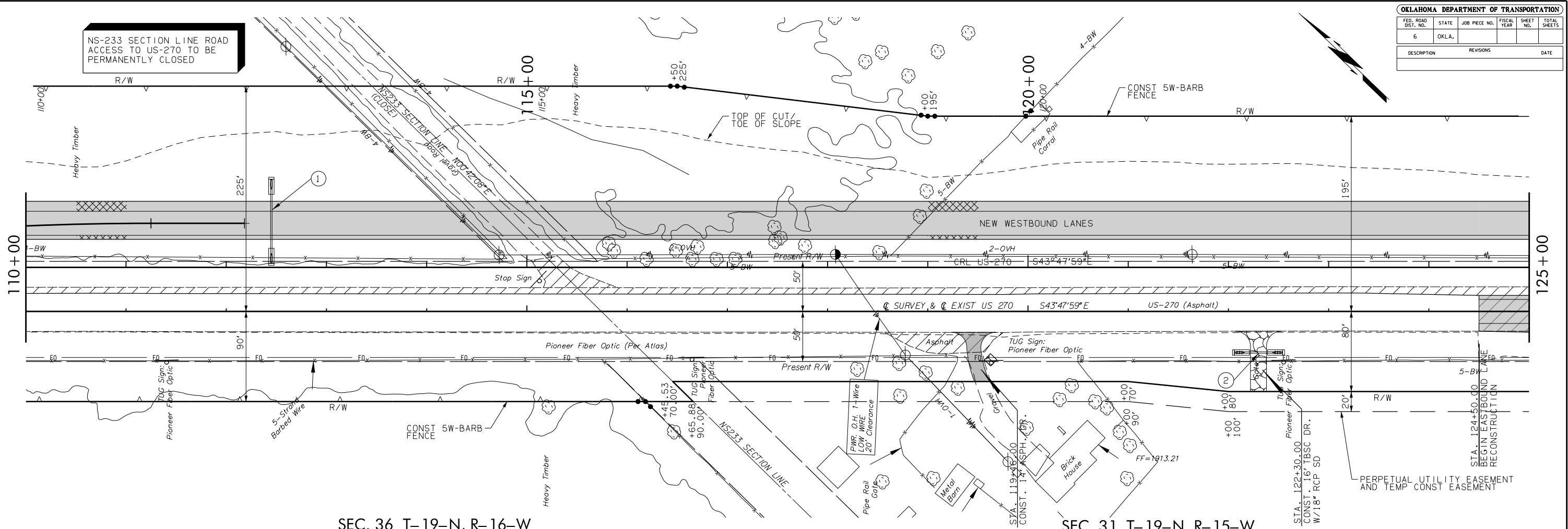
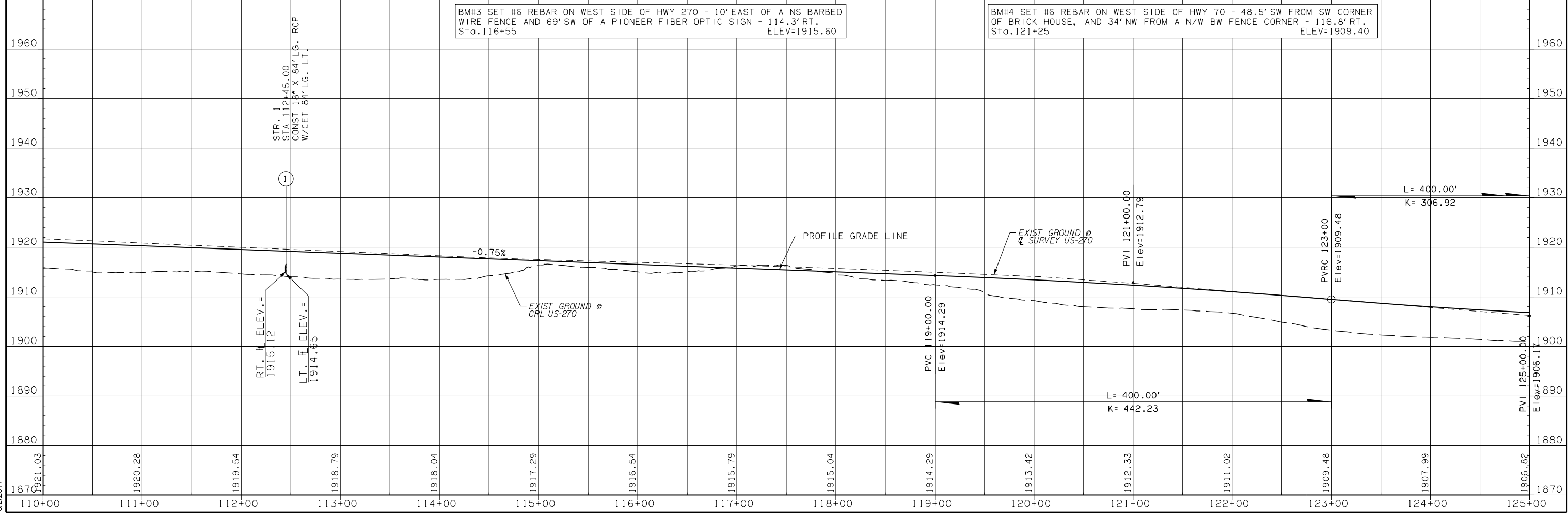


NS-233 SECTION LINE ROAD ACCESS TO US-270 TO BE PERMANENTLY CLOSED



SEC. 36 T-19-N, R-16-W

SEC. 31 T-19-N, R-15-W



BM#3 SET #6 REBAR ON WEST SIDE OF HWY 270 - 10' EAST OF A NS BARBED WIRE FENCE AND 69' SW OF A PIONEER FIBER OPTIC SIGN - 114.3' RT. Sta. 116+55 ELEV=1915.60

BM#4 SET #6 REBAR ON WEST SIDE OF HWY 270 - 48.5' SW FROM SW CORNER OF BRICK HOUSE, AND 34' NW FROM A N/W BW FENCE CORNER - 116.8' RT. Sta. 121+25 ELEV=1909.40

8/2/2017